



MENZED



Regional Contacts

	Area Coordinator:	Testing:
Auckland	Andre Ah Chow auckland@mensa.org.nz	John DiLeo auckland.testing@mensa.org.nz
Bay of Plenty	Maurice van Liempd bayofplenty@mensa.org.nz	
Canterbury	James Thorpe canterbury@mensa.org.nz	Tracey Berry & Cheryl Davies canterbury.testing@mensa.org.nz
Hawke's Bay	<i>Vacant</i>	Bethany Jones hbtesting@mensa.org.nz
Manawatu	Darroch Ball manawatu@mensa.org.nz	Darroch Ball manawatu.testing@mensa.org.nz
Marlborough / Nelson	Rhys Bromell nelson@mensa.org.nz	
Northland	Evelyn Manley northland@mensa.org.nz	
Otago	Robert Choveaux otago@mensa.org.nz	Lisa Jankowska otago.testing@mensa.org.nz
Southland	David MacDonald southland@mensa.org.nz	
Taranaki	<i>Vacant</i>	
Waikato	Douaine Simmons waikato@mensa.org.nz	Murray Belchamber hamilton.testing@mensa.org.nz
Wairarapa	<i>Vacant</i>	
Wellington	Robert Gentejohann wellington@mensa.org.nz	Philip Martin wellington.testing@mensa.org.nz
West Coast	Wil Nicoll west.coast@mensa.org.nz	
	National Testing Coordinator:	NZ members overseas:
	Alana Chester national.testing@mensa.org.nz	Lesley Gooch mdata@mensa.org.nz
	Supervisory Psychologist:	National Area Coordinator:
	Aloma Parker psychologist@mensa.org.nz	Jean Xin events@mensa.org.nz

Mensa NZ on Social Media

Twitter	@MensaNZ
Instagram	@mensa_nz
Facebook Page	facebook.com/officialmensanewzealand
Facebook Group	facebook.com/groups/mensanewzealand

Contents

From the Editor	4
Notices	5
NatCom Nominations	6
Upcoming Events	6
2022 National Gathering	8
Tobacco Register	9
Time to Change? Petrol Car in Figures and Other Thoughts	10
Crossword	12
Mensa Quizzes.....	14
Personas	15
Mensa World Journal, June 2022, Issue 113	16
What's in the MWJ this month?	17
From the Excomm	18
Mensan Author – Antonella Gambotto-Burke	20
Answers & Solutions	22
Contacts	23
Shop	Back cover

Page 2 watermark:

Map of New Zealand with regions outlined

freevectormaps.com

Cliparts throughout this issue:

clipart-library.com

Cover image:

Fractal art contributed by

Andy Dunn

From the Editor

MENZED SUBSCRIPTION

e-Menzed: Free of charge

Printed copy for Mensa NZ members: NZ\$20

Overseas Mensa NZ members: NZ\$30

International Mensa members: NZ\$50

MENZED ADVERTISEMENTS

Personal (members): up to half a page free

Commercial (members): \$15 half page,

\$30 full page

Non-members: \$30 half page, \$60 full page

Contact the editor for details or queries.

The articles and views of this publication, and the opinions expressed, are not necessarily the work or opinions of Mensa New Zealand. Permission is granted to all Mensa publications to reproduce any original material contained in *Menzed*, provided the source, author, and editor are acknowledged, and all copyright notices are repeated. All material is otherwise the property of its author; enquiries regarding replication should be forwarded to editor@mensa.org.nz or the author in question. Copyrights: Unless specified otherwise, the pictures are and remain the property of their authors and permission is granted to Mensa New Zealand to reproduce them for a given issue of *Menzed* when submitted for publication.

NatCom Elections:

Check out [page 6](#) for details. Further details on the positions of chair, secretary, treasurer, and ombudsman can be found in the previous issue. I want to emphasize that the closing date for nominations is **June 30th**, so get your nominations in soon!

~~~~~

## 600<sup>th</sup> issue:

The 600<sup>th</sup> issue of *Menzed* is coming, and we are looking for an exciting design/artwork for the cover. No specification for theme or style, get creative! The issue will coincide with the election period, so that may be a possible theme as well. Submit your covers to the editor today!

~~~~~

Next submission deadline:

20th of June 2022

With the 600th issue on the horizon, now more than ever we are seeking exciting stories/articles, wonderful photos/artworks, confounding puzzles, and whatever else you can contribute. Submissions are to be emailed to editor@mensa.org.nz for consideration.

Cheers! ☺

Andre Ah Chow

Editor



Notices

Insomnia studies

Obviously, you all have a high IQ, but how many of you suffer (or have suffered from) insomnia or an inability to switch off when you want to? Our buddies at Mensa International are asking if any of you are aware of any studies that have been done on insomnia and high IQ?

They are also asking if you have any tips for people struggling to switch off so that they can go to sleep.

If you can provide any information or tips, please forward them to Lesley Gooch via mdata@mensa.org.nz and she will pass them on. Thank you.

~~~~~

## New Members

A big welcome to our new members:

|                   |          |
|-------------------|----------|
| Michelle Wehmeyer | Auckland |
| Michael Lin       | Hamilton |



**Lesley Gooch**

Membership Data

## New membership system in Gecco.

Mensa NZ has implemented a much-needed upgrade of legacy systems and software for membership and accounting. First was the transfer of all accounting to Xero software. Now we have nearly completed a new software system with Gecco for membership.

We have moved to rolling accounts, and invoices will be sent out for Mensa membership renewals. An email will be sent out to all members once we are satisfied with the system and go live. Thereafter, members will be able to login to Gecco. We will have a dedicated administrator to help with any issues, namely Jenny Cao, contactable via: [gecco.admin@mensa.org.nz](mailto:gecco.admin@mensa.org.nz).

The next stage will be to replace the website to join with Gecco Membership. The existing website is problematic and will also reach end of life in October 2022. It has been necessary to remove login access to the website for now, until the Gecco system is Live. We will let all members know when it's time to login. Any questions please let me know.

**Joanna Bosman**

Membership Officer

# NatCom Nominations

# Upcoming Events

## Calling for nominations for the 2022 Mensa NZ Elections

You may nominate yourself or another Mensan for any of these positions on the National Committee (NatCom) of Mensa NZ:

- Chair
- Secretary
- Treasurer
- National Committee member (4 seats)
- Ombudsman

Please submit your name and elected position to: [elections@mensa.org.nz](mailto:elections@mensa.org.nz)

Nominations can also be posted to:  
Mensa New Zealand Inc.

NATIONAL OFFICE

PO Box 5765

Victoria Street West

Auckland 1142

**Nominations close on June 30<sup>th</sup>.**

After nominations close, you will be required to submit your work CV or Mensa work CV. Instructions on how to vote will be sent out to all members after this date.

## CANTERBURY

### Canterbury Meet-Up

Wednesday 15 June, 6:00 pm

Dice & Slice

181 High Street, Christchurch Central City

Get together and meet other Mensans from Canterbury for a relaxed evening.

This is the first social event in Canterbury in a long time - so it will be an informal "get to meet each other" evening with a large selection of games/puzzles.

RSVP: [canterbury@mensa.org.nz](mailto:canterbury@mensa.org.nz)

*(More events listed on the next page)*

*(Auckland events will be emailed out to the Auckland members at a later date)*

Only members of good standing (i.e. membership subs expiring no earlier than June 30<sup>th</sup> 2023) will be eligible to stand for election.

### Reenal Chandra

Election Supervisor

email: [elections@mensa.org.nz](mailto:elections@mensa.org.nz)

# Upcoming Events

## HAWKE'S BAY

### National Mensa Yule Meeting

17-19th June 2022.

Toad Hall, Napier, Hawke's Bay.

For registration forms and questions:  
contact organisers at:

[bethany.f.jones@gmail.com](mailto:bethany.f.jones@gmail.com)

Come and join us for another 'beat the winter blues' Yule meeting in sunny Hawke's Bay!

We are at a different venue, in Napier this time, allowing for exploration of different activities. Activities included in the price are the hearty winter meals, puzzle book, 'pub' quiz, Saturday presentation, chin wags, discussion, Sunday morning tea at the local planetarium with a night sky presentation, beach walks etc etc. Other local options not included in the price include a visit to the Faraday Centre, National Aquarium, and Art Deco walk.

We look forward to hosting you all at our traditional winter meeting.

The local HB organisers, Heather, Sue, Bethany, Robert W and Jenifer.

## WELLINGTON

### Wellington Pub Quiz

Tuesdays 7 & 21 June

6pm dinner, 6:30 pm quiz

The Old Bailey, 101 Lambton Quay

(corner of Lambton Quay & Ballance St)

A table is booked under the name of "The Muppets". Come for dinner and conversation or join in when the quiz starts.

Email Laurice: [greatkiwipoet@gmail.com](mailto:greatkiwipoet@gmail.com)

~~~~~

Wellington Lunch SIG

Wednesday 22 June, 12:30pm

Rosie's Red-Hot Cantina & Taco Joint

4 Queens Wharf (TSB Arena)

WellingtonLunchSIG@yahoo.com

Come along to our monthly lunch for an interesting chat - no RSVP necessary

~~~~~

### 2022 National Gathering

9-11 September

Mercy Conference Centre

15 Guildford Terrace

Meet up with Mensans from around the country! Enjoy a weekend full of stimulating conversations and activities. Full details available on the next page.

# Wellington

## 2022 NATIONAL GATHERING

**MENSA NEW ZEALAND  
SEPTEMBER 9-11**

**CURIOSITY. CONVERSATION. FUN.**

### Culture & Exploration

Our capital city thrives with history, culture, and attractions. Visit Te Papa, the Waterfront, Weta Workshop, Katherine Mansfield House, and more with fellow Mensans!

### Learning & Games

We're putting together a great slate of speakers - are you passionate about something you want to share? We'd love to have you! We will also host the traditional games and puzzles at our venue for some friendly competition.

### Conversation & Friendship

Meet up with old friends and make new ones. Enjoy a weekend full of stimulating conversation over a bite or two from Wellington's superb food scene.



 \$30 to attend

 RSVP:  
[wellington@mensa.org.nz](mailto:wellington@mensa.org.nz)

 Mercy Conference Ctr  
15 Guildford Terrace  
Wellington 6011

# Tobacco Register

The objective to rid New Zealand of tobacco in ten years is laudable. The main assault strategy is on helping smokers to stop smoking. This is good but it is akin to bucketing out the paddling pool while the filling hose is still on. The inflow of new water, the influx of new smokers must be turned off or the task cannot end in ten years or in a hundred years.

## **A strategy to achieve the aim of ridding New Zealand of tobacco.**

### **Step 1: Registration Days**

Require all current smokers to register now (at no cost) as Tobacco Users.

Anyone over the age of eighteen may register.

No proof of actual use or addiction is required.

Issue all who register with a photo-identity tobacco-card.

### **Step 2: Closing Date**

Close the register!

Nobody of any age can be entered on the register after its closing date.

Anyone on the register may request and be granted removal from the register without cost but may not rescind that request and shall not be returned to the list after

requesting to be removed.

Removal will include withdrawal of the issued ID tobacco-card.

No additional or replacement ID cards will be made or issued after the closing date.

### **Step 3: Restriction**

Restrict the sale, supply and use of tobacco strictly to registered users.

Purchase will require proof of identity by production of the tobacco-card.

Smokers in public at any time may be asked to produce their card.

Prosecute offenders who smoke while unregistered or who sell or supply tobacco to non-registered persons.

### **Step 4: Elimination**

Continue the fight to help smokers to stop; empowered with the knowledge that no new smokers will replace them.

### **Murray Belchamber**



# Time to Change?

## Petrol Car in Figures and Other Thoughts

First the shocking truth: The average petrol car (in Germany) uses 7.8 litres of petrol per 100 kms. This is the equivalent of 70 kWh of energy and produces 17.5 kg of CO<sub>2</sub> (2.33 kg CO<sub>2</sub> per litre). Petrol engines using the Otto cycle (most engines) are between 10 and 30% efficient, the rest is emitted as heat. To propel a medium sized car at highway speed requires about 18 kW of power, the other two thirds of the energy in petrol are released as heat - a 45 kW heater under your bonnet, the equivalent of 20 household type electric plug-in heaters. Criminal waste?

### House or car?

In the United Kingdom the average oil central heating for a house uses approx. 1,700 litres of diesel per year, and today's burner units are 90% efficient. Driving a petrol car for 22,000 km per year is comparable to heating a house with central heating, except that the outside gets snugly warm, not the inside. Why did we allow this to happen?

### All equally bad?

In town, the efficiency of the petrol engine decreases to as low as 10%. Diesel engines are slightly more efficient but the highest efficiency of a production petrol

engine is found in the Toyota Prius hybrid car - the company claims an efficiency of 40% of the engine that uses the Atkinson cycle (not as much torque but utilises more of the energy of the expanding gas).

### How about electric?

According to the Fraunhofer Institute, electric cars produce up to 28% fewer greenhouse emissions than a top-range diesel and 42% fewer than a small petrol car (assuming 13 years of average useful life), using the electricity mix produced in Germany (approx. 45% renewable). In New Zealand with its 85% renewable energy, the advantage will be considerably bigger (but not double because much of the emissions is incurred during the production of the battery in a different country).

### How about the cost?

According to the German automobile association (ADAC), electric cars have similar if not slightly lower whole-of-life costs compared to same sized vehicles with petrol engines. Running costs are cheap as chips as the following comparison (NZ prices) shows:

*(continue next page)*

# Time to Change?

## Petrol Car in Figures and Other Thoughts

*(continuing from previous page)*

Mazda 3: 6.8l/100km, 14,000 km/year,  
\$2.50/l, annual fuel cost: \$2,380

Toyota Prius (hybrid): 3.8 l/100km,  
annual fuel cost: \$1,330

Nissan Leaf: 18 kWh/100km,  
\$0.15/kWh, annual fuel cost: \$380

(Source: rightcar.govt.nz)

Caveat: I have owned each of the three models and can confirm that actual consumption is higher (particularly the two Mazdas were nowhere near the above figures), so the real price differential is even greater.

### **Any other perks that come with electric cars?**

Take into account the low maintenance cost of EVs (no oil change, no spark plugs, no air filters, no coolant, no ignition, no variable transmission etc.) and the lower maintenance frequency, and it becomes clear why a car that has a high price tag can be as cheap as a petrol car, just cleaner, quieter and faster.

Now the secret is out: Quieter and faster. Driving a V8 might be spectacular, but many ordinary electric cars have similar

acceleration (Tesla 3 Standard 0-100kph: 6.1s) - without waking up the neighbourhood and without the stench.

### **Why don't we all drive electric cars then?**

It's a bit like comparing gas heaters with electric heatpumps: The purchase price of the gas device is cheap, but running costs are high. Electric heatpumps require an initial investment but are one of the cheapest forms of heating in New Zealand (according to Consumer Institute). Likewise, the purchase price of electric cars is high and requires saving up but then...

### **EVs for the masses?**

No, if you hardly use the car, hanging on to the old banger might be a better choice for your pocket and for the environment. Also, if you live in an apartment and can't charge at home, because public fast chargers are expensive.

### **Why did the revolution take so long?**

To find out, watch the 2006 documentary classic "Who Killed the Electric Car":

[https://en.wikipedia.org/wiki/Who\\_Killed\\_the\\_Electric\\_Car%3F](https://en.wikipedia.org/wiki/Who_Killed_the_Electric_Car%3F)

Go EVs!

**Robert Gentejohann**

# Crossword

## ACROSS

5. As floors are cleaned, some dogs convened in there  
Prepared to come without that naughty air. (6-6)
8. Sage, say, could make arch a bit more flexible. (8,4)
9. Some poor constituents left over hostilities. (6)
10. Form of sentence, payment for wrong, as pronounced. (6)
11. Lock-up garage within call used for rare glider. (6)
13. He completed Cut and Paste in place of clicks. (6)
14. It's a great help, always being in the zone! (8,4)
15. Unusual crystal trophy on ride being exceptional. (12)

## DOWN

1. One in charge falling in with differences greedily. (12)
2. When some speak, they mean exactly what they say! (6)
3. The recalcitrant do okay at high school ages. (6)
4. Flicks pen, providing massive entertainment. (12)
6. Paul accepting noun in Low Aramaic conveys "bells". (12)
7. Sadly two metres short, notable zen decoration. (12)
12. Old detective to tell about judge's bit of work. (3,3)
13. The kind of place where everyone can play  
Is simply, rather coldly, thrown away. (6)

**Contributed by**

**Richard Blake**

Every letter of the  
alphabet occurs at  
least once in the  
solution.

**Solution provided in the next issue**

# Crossword

|    |    |    |    |    |    |    |    |    |    |    |    |    |
|----|----|----|----|----|----|----|----|----|----|----|----|----|
| 1  |    | 2  |    | 3  |    | 4  |    | 5  |    | 6  |    | 7  |
|    |    |    |    |    |    | 8  |    |    |    |    |    |    |
| 9  | 10 |    | 11 |    | 12 |    |    |    |    | 13 |    |    |
|    |    |    |    |    | 14 |    |    |    |    |    |    |    |
| 15 |    |    |    |    |    |    |    |    |    | 16 |    |    |
|    |    |    |    |    | 17 |    | 18 |    | 19 |    |    |    |
| 20 |    | 21 |    | 22 |    |    |    |    |    |    | 23 |    |
|    |    | 24 |    |    |    |    |    |    |    |    |    |    |
| 25 |    |    |    |    |    | 26 |    |    |    |    |    |    |
|    |    | 27 |    |    |    |    |    |    |    |    |    |    |
| 28 |    |    |    |    |    | 29 |    | 30 |    | 31 |    | 32 |
|    |    | 33 |    |    |    |    |    |    |    |    |    |    |
| 34 |    |    |    |    |    | 35 |    |    |    |    |    |    |

## CRYPTOGRAMS NOTICE

Sadly, we will be unable to continue cryptograms for the foreseeable future. We would like to thank Tony Ellis for all the cryptogram contributions to Menzed.

The answers to last month's cryptograms have been included on [page 22](#).

# Mensa Quizzes

**Contributed by Todd Foster**

In February Queen Elizabeth reached 70 years on the British throne. It will be celebrated in June, so this month's questions all relate to monarchs or royalty in some way. The initial letters of the answers relate to her achievement. Once you work out what that is the letters should help you with other answers.

1. What plant is the overwhelming favourite of monarch butterflies?
2. Which twelfth century English king was known as 'The Unready' because he was ill advised?
3. What position was held by Lord Louis Mountbatten from 1947-48?
4. Which singer was known as the 'King of Pop' from 1956?
5. What was the surname of US pop singer Prince (1958-2016)?
6. What longstanding display of military pageantry will take place in London on 2 June 2022?
7. What colour completes the title of an 1895 collection of short stories by science fiction writer Robert Chambers? The King in .....
8. Who was the wife of King Alexander of Scotland from 1285 until his death the following year?
9. Who is the younger daughter of Queen Elizabeth's son Andrew and Sarah Ferguson?
10. Who was the mother of Good Queen Bess?
11. Who did King John succeed as monarch of England in 1199?
12. In which Italian church was the first Holy Roman Emperor Charlemagne crowned in 800AD?

**Answers can be found on [page 22](#)**

# Personas

Paid advert by a NZ Mensan

**Who am I?**

**Who do I think I am?**

**Who do others think I am?**

Questions asked by existentialists, as much as by people concerned about bettering their lives.

Personas helps both groups get answers (<https://personas360.com>). It is a 360 online personality testing platform using the most scientific personality model, the Big 5. It offers the unique opportunity to ask others to answer about you, revealing who you think you are and who others think you are.

The Big 5 is a fascinating model of personality used by academics and scientists worldwide. The Big Five has produced results [that remain largely consistent](#) across a person's lifespan, which can be used to predict at least some part of a person's likely [academic achievement](#), dating [choices](#), and even [future parenting behavior](#).

Personas aims to be truly reliable, scientific, and trustworthy, as per the standards of this community. Thus, all results come from academic content linked in the bibliography section.

Personas help people understand themselves better, providing results with a lot of depth to dig into. Those, in turn, enable people to lead better lives by seeking a greater fit with their personality natural tendencies. E.g., if you are primarily open to experience, seek jobs and ways of life that feed your curiosity, or, if you are low on extraversion, be aware of how draining world engagement will be for you).

Use the **MENSANZ** code for 20% off and explore more about yourself, your personality, and how you're perceived today.

About myself, I am Thibault, a Mensan in Wellington. If you have some feedback/questions, please get in touch! :)

**Reviews by NZ mensans:**

*"Great page with a lot of interesting and helpful information! I highly recommend you check it out!"* Jamie, New-Plymouth.

*"Plenty of detail and stats for those interested in a greater understanding of the peer-reviewed 5-factor personality model and where you sit on the distribution curves. I would recommend this above any other personality test."* Daniel, Christchurch



**MENSA**  
INTERNATIONAL

# MENSA WORLD JOURNAL

JUNE 2022 | ISSUE 113



## OFFICER DIRECTORY

**Chair:** Mr Bjorn Liljeqvist [chairman-mil@mensa.org](mailto:chairman-mil@mensa.org)

**Director Admin:** Ms Isabella Holz [admin-mil@mensa.org](mailto:admin-mil@mensa.org)

**Director Development:** Mr José L. Martínez [development-mil@mensa.org](mailto:development-mil@mensa.org)

**Treasurer:** Mr Jacek Cywinski [treasurer-mil@mensa.org](mailto:treasurer-mil@mensa.org)

**Dir. Smaller National Mensas:** Mr Tan Kee Aun [dsn-mil@mensa.org](mailto:dsn-mil@mensa.org)

**SIGHT Coordinators:** Mr Henkhenk Broekhuizen, Mr Thorsten Kressig [SIGHT@mensa.org](mailto:SIGHT@mensa.org)

**SIG Coordinator:** Ms Nancy McMahan Farrar [sigs@mensa.org](mailto:sigs@mensa.org)

**Ombudsman:** Ms Vicki Herd [ombudsman@mensa.org](mailto:ombudsman@mensa.org)

**Hon. President:** Mr Udo Schultz [udo-schultz@t-online.de](mailto:udo-schultz@t-online.de)

**Executive Director:** Mr Michael Feenan [mensainternational@mensa.org](mailto:mensainternational@mensa.org)

Slate Barn, Church Lane, Caythorpe, Lincolnshire NG32 3EL, UK

Tel/Fax +44(0)1400272 675 [www.mensa.org](http://www.mensa.org)

## EDITORIAL STAFF

**Editor:** Ms Kate Nacard [mwjeditor@mensa.org](mailto:mwjeditor@mensa.org)

**Science:** Mr John Blinke [Johnb44221@cs.com](mailto:Johnb44221@cs.com)

**Puzzles:** Ms Therese Moodie-Bloom [tmb@ozemail.com.au](mailto:tmb@ozemail.com.au)

**Profiles:** Dr Susan Jensen [suejensen57@gmail.com](mailto:suejensen57@gmail.com)

**Features:** *Position Vacant*

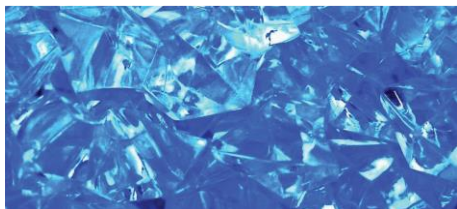
36 Macaulay Rd  
Stanmore NSW  
2048 Australia  
T: +61 402152858

# What's in the MWJ this month?

Reprinted from the *Mensa World Journal*, June 2022, Issue 113, Editor Kate Nacard

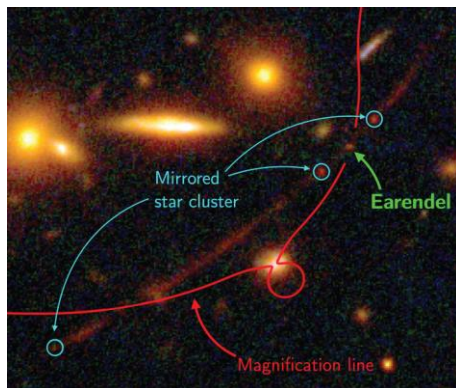
- José Luis Martínez, Mensa International's Director of Development hopes for members to adapt to and enhance our progress. Read his advice on **p3**.

- did you know you can make tiny diamonds without using explosives? **P4** brings us the latest in this scientific research.



- world-acclaimed author, Mensan Antonella Gambotto Bourke, has written another book which will be released this month. Learn more about Antonella and her writings on **p5**.

- (cover story) American Mensan Mike Wacht is our Member Profile this month; he's put his photographic talents towards enhancing the lives of underprivileged Angolans. **p7**



- on **p8**, read about the Hubble telescope's find of a star that is the most distant single star ever detected in outer space - 28 billion light-years away from Earth!

- mine or ours? More recent research into the workings behind the brain's processes when making a choice - **p9**

- on **p10**, John Blinke brings us the latest in scientific news

- **p11** - International Directory

- **p12** - Therese's Teasers

Download the full-colour MWJ each month from [www.mensa.org](http://www.mensa.org)

**Kate Nacard**

Mensa World Journal Editor

# From the ExComm

Reprinted from the *Mensa World Journal*, June 2022, Issue 113, Editor Kate Nacard

## **Adapt. Enhance. Overcome.**

In my last article, I told you about the plans I have to develop Mensa all over the world and how COVID was a big obstacle for this Argentinian to leave his country and perform his job. That is starting to become less of an issue, as restrictions loosen up in more and more countries and Argentina has more stable numbers on vaccines and new infections, so I won't address that topic today.

What I want to do right now... no, that is not correct. What I believe we NEED right now, is a call to action. Now that I have seen the innards of Mensa International, and how the cogs turn in every step of every process, I've found that we have a very small group of volunteers, with the same names appearing over and over again in every call, with almost no new members showing up. I'm 100% grateful for those volunteers and the work they have done and will continue to do, but I also believe that Mensa as a whole has become slow to react to the new needs of our membership, of our new national chapters, and of the new times we are living in. We are doing our best to adapt, improve and overcome, but we need new points of view, new ideas,

and new ways to achieve better and faster results. And for that, we need to have more volunteers, with new names filling the new positions. For the sake of clarity, I'm not looking for a massive substitution, as I believe that anyone should work in Mensa all the time they want, as we always need more hands to support our ever-growing membership. What I believe we must achieve, is to enrich our knowledge base with new approaches, and I think that the best way to make that happen, is enlarging our volunteer list, perfecting our methods with new points of view, discarding what we know doesn't work and getting the best output possible.

During our recent ExComm meeting (our first in-person meeting!) we started taking steps towards that goal. It was obvious in the first second of our meeting that our different origins, cultural backgrounds, professions and approaches would bring new stuff to the table, and the way that happened was beautiful. We are already starting to change how we track our work, using IT tools very common in big companies (Jira, Trello, Power BI, etc.) but never used here.

*(continue next page)*

# From the ExComm

Reprinted from the *Mensa World Journal*, June 2022, Issue 113, Editor Kate Nacard

*(continuing from previous page)*

We are also working towards the goal of making Mensa International closer to our members, providing insights, making available proven and successful tactics and procedures from national chapters to solve common issues that we all have seen in our national groups.

And this is just the tip of the iceberg. We are talking about big changes that will make our work as volunteers more streamlined, more direct, and more visible for everyone. You voted for us, so you should have the possibility to see our work and measure it without delving into a sea of documents.

As I said before, my personal opinion is that we, as an association, have become slow to react, slow to change and slow to adapt. We can survive in this state as we always did, but I want more. I want bigger, better, faster. But I also believe that we have the needed permeability to change our ways. To learn and improve; to discard, and to enhance. I've seen this change starting at our ExComm meeting, and I would like you to see it too.



**José Luis Martínez**

International Director of Development.

## POSITION VACANT

The role of **Features Editor** for the *MWJ* is vacant. The role constitutes contributing a monthly column of 500-600 words based on recent authoritative research into any aspect of intelligence. All references must be cited in the article submitted. All applicants must be members of good standing in their National Mensa.

Please send your application to:

[mwjeditor@mensa.org](mailto:mwjeditor@mensa.org)

# Mensan Author – Antonella Gambotto-Burke

Reprinted from the *Mensa World Journal*, June 2022, Issue 113, Editor Kate Nacard

**“Woman as comestible. Woman as kingmaker. Woman as oblivion.”**

Antonella Gambotto-Burke opens *Apple: Sex, Drugs, Motherhood and the Recovery of the Feminine* with a single question: why is our culture governed by the principle of separation?

Beginning with a devastating exploration of the 1960s, understood up until now as the era of female liberation, free love and the tribal sharing of drugs, Gambotto-Burke deconstructs the past two centuries and shows how we are, in fact, moving towards the age of the Nietzschean übermensch, one in which femininity will, if we do not change, be erased. She skilfully draws together innumerable threads, from the shockingly personal to the broadest societal trends and cutting-edge scientific research, to construct a brilliant and startling thesis.

Anxiety, artificial wombs, brutality, the class system, depression, dieting, racism and other issues - including the first plausible theory for rubber fetishism and other “kinks” such as choking or breathplay – are explained within the context of the dominant cultural paradigm.

A devastating uppercut to a patriarchal ideology that has marred billions of lives, *Apple: Sex, Drugs, Motherhood and the Recovery of the Feminine* completely revises our understanding of addiction, art, crime, drug use, homosexuality, murder, pornography, sex, war, and, critically, the significance of birth, infancy and motherhood in relation to human existence.

Antonella is the author of *The Eclipse: A Memoir of Suicide* and *Mama: Love, Motherhood and Revolution*, among other books, and has contributed to a raft of international newspapers and magazines, including *The Sunday Times*, *The Telegraph*, *The Mail*, *Metro*, and others in England, where she now resides, and for various editions of *Arena*, *Elle*, *GQ*, *Harper's Bazaar*, *Vogue* and so on. She also has a weekly literary column in the *The Weekend Australian*, and *The Mirror* (UK) recently included her in a select group of the world's most inspiring women.

*(continue next page)*

# Mensan Author – Antonella Gambotto-Burke

Reprinted from the *Mensa World Journal*, June 2022, Issue 113, Editor Kate Nacard

*(continuing from previous page)*

Tatler described her as a novelist of “great sensitivity” and as having “a keen eye for satire, which she uses to great effect.” In *The Sunday Age*, novelist Matthew Condon wrote that reading her fiction is “like being unable to stop staring into the sun when you’ve been told that it damages your eyes,” and *Who* magazine described her as possessing “a major literary talent.”

Antonella is known for longform journalistic nonfiction, and her work was featured in *The Best Australian Profiles*. Her selection of interviewees is eclectic. She has interviewed cardiothoracic surgeons and film stars, authors and rock luminaries, artists and academics, fashion designers and royalty. Her subjects include Princess Haya bint Al Hussein, Bette Midler, Marilyn Manson, Sasha Grey, Nick Cave, Morrissey, Robert Smith of the Cure, Martin Amis, Neil Gaiman, Chuck Palahniuk and others.

Antonella first joined Mensa in 1987 while living in Cambridge, England. She returned from Australia to the UK (in 2017) with her teenage daughter and has a passion for clothes and music (she’s recently released her first album), but is passionate about, above all, writing. “I have a habit of turning my hobbies into work, which I do. Whilst I have written very silly pieces of journalism on occasion for fun, my great love is writing seriously,” she says.

The author of six internationally acclaimed books, Antonella can be followed on:

[www.instagram.com/gambottoburke](https://www.instagram.com/gambottoburke)

[www.facebook.com/gambottoburke](https://www.facebook.com/gambottoburke)

[www.afmusiclondon.com](https://www.afmusiclondon.com)



# Answers & Solutions

## Cryptogram Solutions (Issue 597):

"All presidents start out pretending to run a crusade, but after a couple of years they find they are running something much less heroic, much more intractable: namely, the presidency."

- (Alfred) Alistair Cooke, English-born US journalist and broadcaster.

"The trouble with modern democracy is that men do not approach to leadership until they have lost the desire to lead anyone."

- William Henry Beveridge, First Baron, British economist.

## Crossword Solution (Issue 597):

|   |   |   |   |   |   |   |   |   |   |   |   |   |
|---|---|---|---|---|---|---|---|---|---|---|---|---|
| J | A | C | U | Z | Z | I |   | A |   | I | F | S |
| A |   | O |   | O |   | N | O | M | I | C |   | Q |
| B | A | D | R | O | A | D |   | M |   | E | M | U |
|   | N |   | A |   | M | E | M | O | I | R |   | A |
| U | N | A | D | E | P | T |   | N |   | I | L | L |
|   | A |   | I |   | L | E | S | I | O | N |   | I |
| B | L | I | S | T | E | R | P | A | C | K | E | D |
| I |   | D | H | A | R | M | A |   | T |   | C |   |
| G | E | O |   | R |   | I | D | E | A | L | L | Y |
| N |   | L | A | R | I | N | E |   | N |   | A |   |
| O | B | I |   | I |   | A | S | S | E | R | T | S |
| T |   | S | W | E | E | T |   | A |   | A |   | U |
| E | V | E |   | D |   | E | X | P | E | N | S | E |

## Answers to the quiz on page 14

1. Swan plant
2. Ethelred
3. Viceroy of India
4. Elvis (Presley)
5. Nelson
6. Trooping the Colour
7. Yellow
8. Yolande of Dreux
9. Eugenie
10. Anne (Boleyn)
11. Richard I (the Lionheart)
12. St Peter's, Rome

Related phrase: **Seventy years**

### SUBMIT YOUR PUZZLES!

Got an intriguing puzzle or riddle? Found something that can get your fellow Mensans scratching their heads? Send them in!

If you would like to do a monthly column/puzzle, please do get in touch as well. Puzzles can be submitted to:

[editor@mensa.org.nz](mailto:editor@mensa.org.nz)

# Contacts

Mensa New Zealand Inc.  
NATIONAL OFFICE  
PO Box 5765  
Victoria Street West  
Auckland 1142  
Ph: (09) 478 9552  
[www.mensa.org.nz](http://www.mensa.org.nz)

## NATIONAL COMMITTEE MEMBERS

### Chairman

Ian Mardon  
[chair@mensa.org.nz](mailto:chair@mensa.org.nz)

### Deputy Chair

Aloma Parker  
[psychologist@mensa.org.nz](mailto:psychologist@mensa.org.nz)

### Secretary

Giulia Dondoli  
[secretary@mensa.org.nz](mailto:secretary@mensa.org.nz)

### Treasurer

John Lee  
[treasurer@mensa.org.nz](mailto:treasurer@mensa.org.nz)

### Membership

Joanna Bosman  
[membership@mensa.org.nz](mailto:membership@mensa.org.nz)

### Other members

Andre Ah Chow

Jacek Cywinski

Ian Dustin

### Editor

Andre Ah Chow  
[editor@mensa.org.nz](mailto:editor@mensa.org.nz)

### Enquiries

Ian Mardon  
[enquiries@mensa.org.nz](mailto:enquiries@mensa.org.nz)

### Gecco Administrator

Jenny Cao  
[geccoadmin@mensa.org.nz](mailto:geccoadmin@mensa.org.nz)

### Gecco BA

Falko Buergerl  
[gecco@mensa.org.nz](mailto:gecco@mensa.org.nz)

### Help Desk

Helen Jamieson  
[helpdesk@mensa.org.nz](mailto:helpdesk@mensa.org.nz)

### Legal Advisor

Callum McPetrie  
[legal@mensa.org.nz](mailto:legal@mensa.org.nz)

### Membership Data

Lesley Gooch  
[mdata@mensa.org.nz](mailto:mdata@mensa.org.nz)

### Mensa Kids Coordinator

Chris Talbot  
[mensakids@mensa.org.nz](mailto:mensakids@mensa.org.nz)

### MiB Tech Officer

Ross Morgan  
[techofficer@mensa.org.nz](mailto:techofficer@mensa.org.nz)

### Ombudsman

Rodney Hetherington  
[ombudsman@mensa.org.nz](mailto:ombudsman@mensa.org.nz)

### Online Shop

Heather Allen  
[shop@mensa.org.nz](mailto:shop@mensa.org.nz)

### Security Officer

Max Francis  
[security@mensa.org.nz](mailto:security@mensa.org.nz)

### SIGHT – Service for Information, Guidance & Hospitality to Travellers

Tim Edwards  
[sight@mensa.org.nz](mailto:sight@mensa.org.nz)

### SIGs

Jean Xin  
[sigs@mensa.org.nz](mailto:sigs@mensa.org.nz)

### Webmaster

Rob DeHart  
[webmaster@mensa.org.nz](mailto:webmaster@mensa.org.nz)

### Xero/Accounts

Akihiro (Aki) Oishi  
[treasurer@mensa.org.nz](mailto:treasurer@mensa.org.nz)

### Young Adults' Coordinator

Ian Mardon  
[chair@mensa.org.nz](mailto:chair@mensa.org.nz)

### Honorary Life Members

Aloma Parker  
Amanda Milne  
David Wright  
Devon Heaphy  
Evelyn Manley  
Judith Tuckwell  
Ron Meadows  
Sue Greatbanks  
Tony Ellis

# Shop

Orders: [mensa.org.nz/shop](https://mensa.org.nz/shop)

Enquiries: [shop@mensa.org.nz](mailto:shop@mensa.org.nz)

Postage and handling:

\$3.50 per order



Playing Cards  
\$7.50



Kiwi Lapel Badge  
\$10



"Hand"y Hi-Liter  
\$7.50



Vistro Pens  
\$3 each



Notepad  
\$6



Certificate  
\$15.95



Coasters  
\$7.95 for 4



Pencils  
\$2 each



T-Shirt  
\$25



Menzed Print Subscription  
\$20 per year

